

GV-AV Series Rotators

A wide range of GV/AV series rotators is available with models and links to suit all forest machine applications.

GV - AV rotators employ a high torque vane motor which ensures high slewing and stopping power.

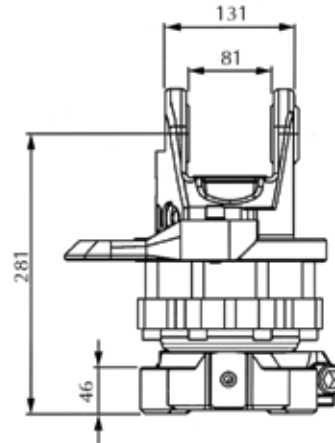
GV models have oil fed from the upper stator ports through the central shaft to the lower base port outlets, to power grapples and attachments

AV models employ a different method of oil porting with only two hydraulic rotator inlet ports mounted to the rotator base and are intended for specific harvester head use only.

GV4



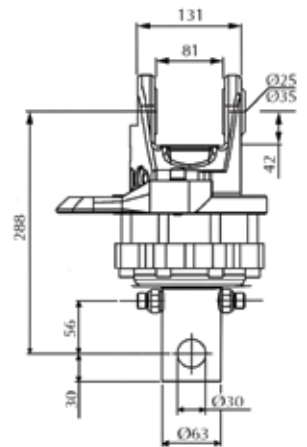
The ideal rotator for use on small forwarder and tractor / trailer cranes. Combines compact dimensions with high slewing torque. Available in flange and shaft mounting options.



GV4E-63/30
(Shaft Mounted)



GV4EFK
(Flange Mounted)



CRANE LINKS
80mm Lower Width
Pages 6 - 7



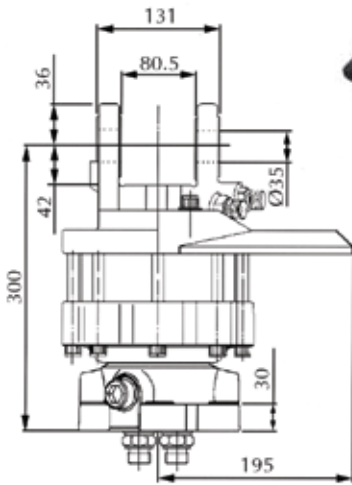
Technical Data	GV4E-63/30	GV4E/GV4K
Rotation	Continuous	Continuous
Weight	27kg	34kg
Max Axial Load Static	45kN	45kN
Max Axial Load Dynamic	25kN	25kN
Torque at 25MPa (3625psi)	1150Nm	1150Nm
Recommended Oilflow	12 l/min	12 l/min

GV6

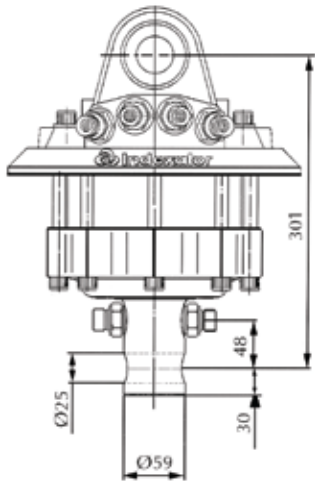


Designed for use with smaller forest machines and truck cranes. GV6 is available in flange and shaft mounting options.

GV6
(Flange Mounted)



GV6-59/25
(Shaft Mounted)

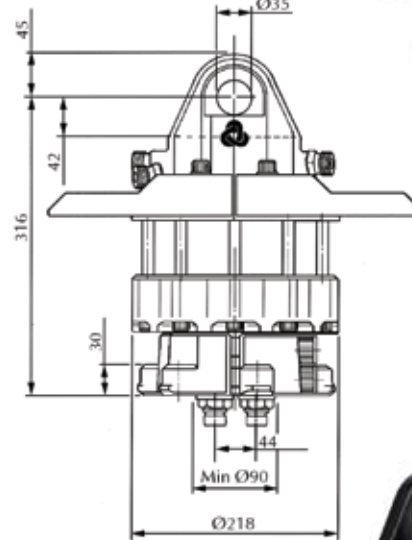


GV12



The world's most popular forest machine rotator, GV12 is designed for use on medium sized forest machines and truck cranes. Available in two upper hydraulic porting options: GV12 with all four hydraulic ports mounted to the front of the rotator. GV12-2 with two ports mounted to each side of the rotator.

GV12



GV12-2



CRANE LINKS
80mm Lower Width
Pages 6 - 7



CRANE LINKS
80mm Lower Width
Pages 6 - 7

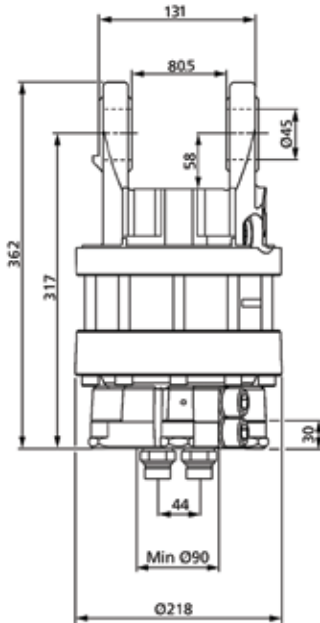
Technical Data	GV6
Rotation	Continuous
Weight	44kg
Max Axial Load Static	60kN
Max Axial Load Dynamic	25kN
Torque at 20MPa (3625psi)	1400Nm
Recommended Oilflow	25 l/min

Technical Data	GV12 / GV12-2
Rotation	Continuous
Weight	56kg
Max Axial Load Static	100kN
Max Axial Load Dynamic	50kN
Torque at 25MPa (3625psi)	2200Nm
Recommended Oilflow	25 l/min

AV12



Designed for use with smaller sized harvester heads which employ the oil feed via the rotator base plate.

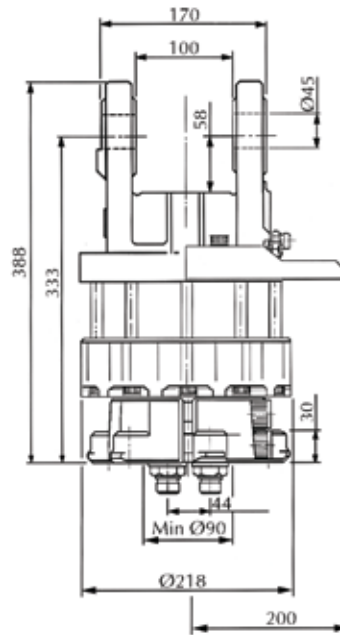


GV12S



The heavy duty rotator for use on larger sized forest machines, truck cranes and medium sized excavators. Available in two upper hydraulic porting options: GV12S with all four hydraulic ports mounted to the front of the rotator; GV12-2S with two ports mounted to each side of the rotator.

GV12S



GV12-2S



CRANE LINKS
80mm Lower Width
Pages 6 - 7



Technical Data	AV12
Rotation	Continuous
Weight	56kg
Max Axial Load Static	100kN
Max Axial Load Dynamic	50kN
Torque at 25MPa (3625psi)	2200Nm
Recommended Oilflow	25 l/min

CRANE LINKS
100mm Lower Width
S Type - Pages 6 - 7

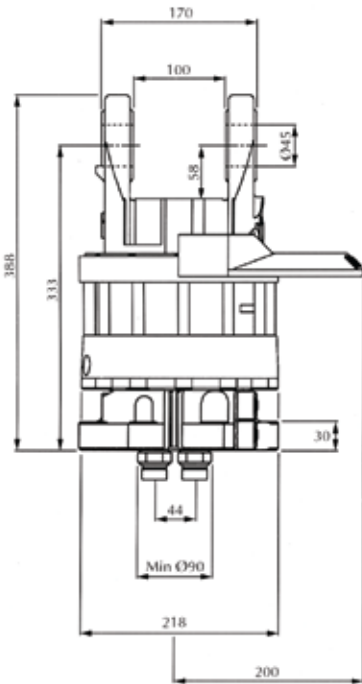


Technical Data	GV12S / GV12-2S
Rotation	Continuous
Weight	58kg
Max Axial Load Static	100kN
Max Axial Load Dynamic	50kN
Torque at 25MPa (3625psi)	2200Nm
Recommended Oilflow	25 l/min

GV14S



A heavy duty rotator with extra high torque slewing motor for use on larger sized forest machines, truck cranes and medium sized excavators.



CRANE LINKS
100mm Lower Width
S Type - Pages 6 - 7



Technical Data	GV14S
Rotation	Continuous
Weight	58kg
Max Axial Load Static	100kN
Max Axial Load Dynamic	50kN
Torque at 25MPa (3625psi)	3300Nm
Recommended Oilflow	35 l/min

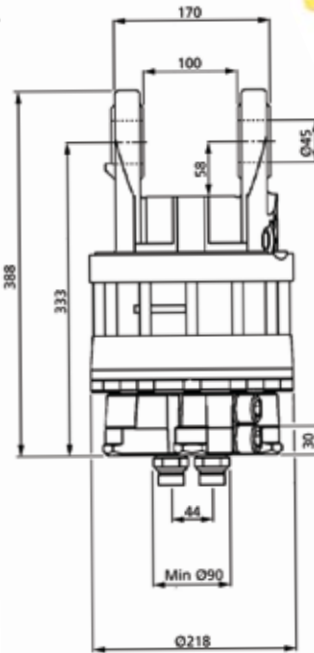
AV14S



A heavy duty harvester rotator with an extra high torque slewing motor for use with medium sized harvester heads which employ the rotator oil feed via the rotator base plate.



Also Available With Solid Centre Shaft AV14SA



CRANE LINKS
100mm Lower Width
S Type - Pages 6 - 7

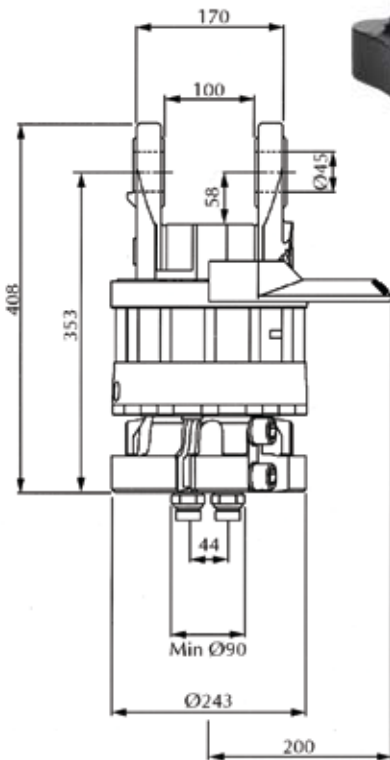


Technical Data	AV14S
Rotation	Continuous
Weight	56kg
Max Axial Load Static	100kN
Max Axial Load Dynamic	50kN
Torque at 25MPa (3625psi)	3300Nm
Recommended Oilflow	35 l/min

GV17S



The largest rotator in the GV series combining high torque slewing motor with high load capacity. For use on large forest machines, truck cranes and medium sized excavators.



CRANE LINKS
100mm Lower Width
S Type - Pages 6 - 7

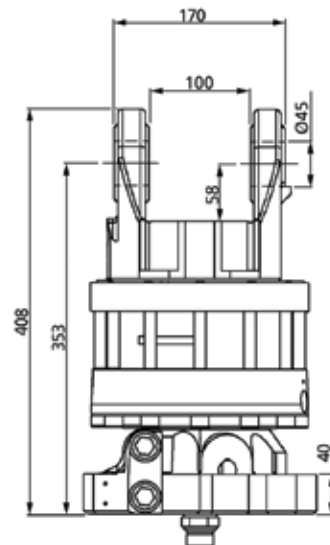


Technical Data	GV17S
Rotation	Continuous
Weight	64kg
Max Axial Load Static	160kN
Max Axial Load Dynamic	50kN
Torque at 25MPa (3625psi)	3300Nm
Recommended Oilflow	35 l/min

AV17S



The largest AV series rotator, combining high torque slewing motor with high load capacity. For use with the largest of standard type harvesting heads employing the rotator oil feed via the rotator base plate.



Also Available With Solid Centre Shaft AV17SA

CRANE LINKS
100mm Lower Width
S Type - Pages 6 - 7



Technical Data	AV17S
Rotation	Continuous
Weight	61kg
Max Axial Load Static	160kN
Max Axial Load Dynamic	50kN
Torque at 25MPa (3625psi)	3300Nm
Recommended Oilflow	35 l/min

GV-AV Crane Links

Available In A Range Of Upper Pivot Hole Bushing Diameters



**Standard
Crane Link**

Width: Upper 80mm
Lower 80mm



**S-Type Standard
Crane Link**

Width: Upper 80mm or 100mm
Lower 100mm



**One Way
Swing Damper Link**

Width: Upper 80mm
Lower 80mm



**S-Type One Way
Swing Damper Link**

Width: Upper 80mm or 100mm
Lower 100mm



**Two Way
Swing Damper Link**

Width: Upper 80mm
Lower 80mm



**S-Type Two Way
Swing Damper Link**

Width: Upper 80mm or 100mm
Lower 100mm

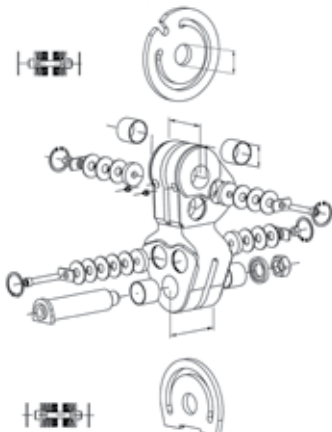


**Excavator S-Type
Standard Link**

Upper Dimensions Made To Fit Excavator Boom Sizes
Lower Width 100mm



**Excavator S-Type One
Way Swing Damper Link**



Swing Damper Links

Swing damper links dampen out the oscillation movement of boom and attachments during crane operation allowing faster, more controlled attachment operation whilst reducing the strain on crane booms and pivots. Swing dampening is achieved via a unique system of brake pads acting upon a brake disc.



MPB-S Link

For Use With GV-S & AV-S
Rotator Models



Offering smooth swing damping of rotator and attachment for faster crane operation, the new MPB-S damper link is based on the proven Multi Plate Brake concept - offering ease of operation, compact dimensions and long service life.



Excavator Quick Coupler Link

With Swing Damping System

CLARK Weld On Link

Available For Standard & S-Type Rotators



Standard



With
Swing Damper



With Rubber Buffer
Damping System

Excavator Coupler Links

Excavator Quick Coupler Link



Diameter: 45mm



Diameter: 35mm

Indexator Link Pivot Pins

